



Pentaho Services

- By Fidel Technologies

<http://www.fideltech.com>

Sales Contact :

Mandar Inamdar (mandar@fideltech.com)

Index

- Who we are – About Fidel
- What is BI?
- Why BI?
- Why Pentaho BI
- Pentaho Capabilities
- Pentaho Related Services
- Case Studies
- Contact Us



About Fidel

Fidel helps organizations and business owners to focus on their core business by helping them with **Technology** and **Consulting** in **Implementing Business Solutions**.

Our Services

- **IT Services** (Application Development & Maintenance, Infrastructure Support)
- **Consulting & Business Solution Implementation** (Sterling Commerce MCF, SugarCRM, CMS (Joomla, Drupal, ModX), GoogleApps, Pentaho)
- **Localization & Testing** (L10N, Translation)

Offices

Tokyo (Japan), Pune (India)

What is BI?

- **Business intelligence (BI)** refers to skills, technologies, applications and practices used to help a [business](#) acquire a better understanding of its commercial context. Business intelligence may also refer to the collected information itself.
- BI technologies provide historical, current, and predictive views of business operations. Common functions of business intelligence technologies are reporting, [OLAP](#), [analytics](#), [data mining](#), [business performance management](#), [benchmarking](#), [text mining](#), and [predictive analytics](#).
- Business intelligence often aims to support better business decision-making.



Why BI?

- Advantages of business intelligence are:
 - the high responsiveness of the company to the needs of its customers
 - recognition of customer needs
 - ability to act on market changes
 - optimization of operations
 - cost-effectiveness
 - quality analysis as the basis for future projections
 - the best possible utilization of resources



Why Pentaho BI ?

Pentaho BI Suite Enterprise Edition

Empower your business and dramatically reduce costs with Pentaho, the commercial open source alternative for BI.



- Pentaho is the first and only comprehensive BI platform to be designed and released in open source, enabling it to benefit from the best the open source community has to offer.
- Pentaho BI Suite Enterprise Edition provides comprehensive reporting, OLAP analysis, dashboards, data integration, data mining and a BI platform that have made it the world's leading and most widely deployed open source BI suite.
- Pentaho's commercial open source business model eliminates software license fees, providing support, services, and product enhancements via an annual subscription.
- Pentaho is the world's most widely deployed open source BI suite.
- Pentaho is the only commercial open source BI suite provider who leads and sponsors all of its core open source BI projects.

Pentaho Capabilities - Reporting

- Pentaho Reporting allows organizations to easily access, format, and distribute information to employees, customers, and partners.
- Flexible deployment from standalone desktop reporting, to interactive web-based reporting to enterprise business intelligence
 - Broad data source support including relational, OLAP, or XML-based data sources
 - Flexible output options including Adobe PDF, HTML, Microsoft Excel, Rich Text Format, or plain text
 - Wizard-driven report design for fast, easy report creation
 - Web-based ad hoc query and reporting for business users
 - Full-featured graphical Report Designer for report developers
 - Enterprise Edition provides enhanced software functionality, comprehensive professional technical support, product expertise, certified software and software maintenance, and more




Steel Wheels Human Resources Dept. - Financial Report
Period ending June 30, 2005

Report Control	Total	Actual	Variance
Revenue			
Product Sales	\$1,200,000	\$1,150,000	(\$50,000)
Service Revenue	\$800,000	\$820,000	\$20,000
License Revenue	\$500,000	\$510,000	\$10,000
Other Revenue	\$100,000	\$100,000	\$0
Total Revenue	\$2,600,000	\$2,580,000	(\$20,000)
Expenses			
Salaries	\$1,500,000	\$1,550,000	\$50,000
Benefits	\$300,000	\$310,000	\$10,000
Travel	\$100,000	\$100,000	\$0
Marketing	\$200,000	\$200,000	\$0
R&D	\$100,000	\$100,000	\$0
Other	\$100,000	\$100,000	\$0
Total Expenses	\$2,300,000	\$2,360,000	\$60,000
Net Income	\$300,000	\$220,000	(\$80,000)



Steel Wheels Invoice

Invoice Number: INV-2005-001
Invoice Date: 2005-06-30
Customer: ABC Company
Address: 123 Main St, New York, NY 10001

Item	Description	Quantity	Unit Price	Total
1	Product X	100	\$100.00	\$10,000.00
2	Product Y	50	\$200.00	\$10,000.00
3	Service Z	1	\$10,000.00	\$10,000.00
Total				\$30,000.00

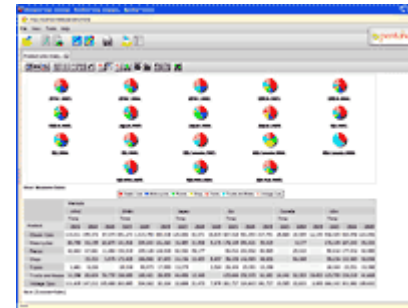
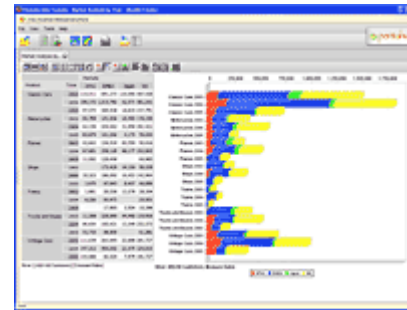
REMITTANCE

Pentaho Capabilities - Analysis

Pentaho Analysis puts rich, analytic power in the hands of your business users - helping them gain the insights and understanding they need to make optimal business decisions.

Pentaho Analysis answers business questions by:

- Making it easy for users to freely explore business information by interactively drilling into and cross-tabulating data
- Providing speed-of-thought response times to complex analytical queries Presenting data multi-dimensionally and letting users select what dimensions and measures to explore
- Offering complete integration with other products in the Pentaho BI Suite



Pentaho Capabilities – Data Integration

Pentaho Data Integration delivers powerful Extraction, Transformation and Loading (ETL) capabilities using an innovative, metadata-driven approach. It has an intuitive, graphical, drag and drop design environment, and a proven, scalable, standards-based architecture. Pentaho Data Integration is a full-featured ETL solution including:

- Rich transformation library with over 100 out-of-the-box mapping objects
- Broad data source support including packaged applications, over 30 open source and proprietary database platforms, flat files, Excel documents, and more
- Advanced data warehousing support for Slowly Changing and Junk Dimensions
- Proven enterprise-class performance and scalability
- Integration with the Pentaho BI Suite for Enterprise Information Integration (EII), advanced scheduling, and process integration
- Common use cases for Pentaho Data Integration include:
 - Data warehouse population
 - Information enrichment by integrating data from various sources
 - Data migration between applications
 - Imports of data into databases from text-files, Excel spreadsheets, relational systems and more
 - Exports of data to other databases or text files
 - Data cleansing by applying complex conditions in data transformations
 - Exploration of data in existing databases (tables, views, etc.)

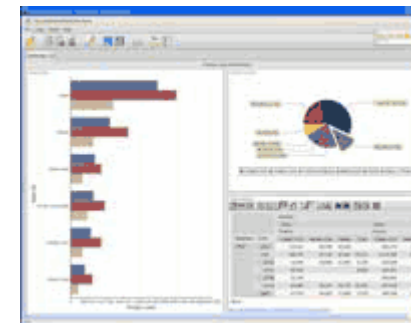
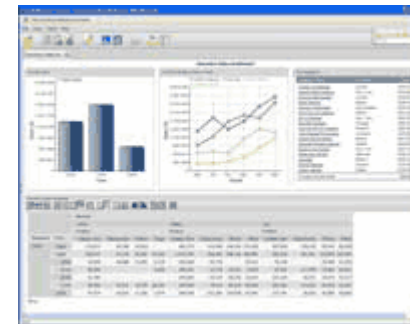
The Pentaho Data Integration Enterprise Console is additional software available in Pentaho Data Integration Enterprise Edition that provides an ETL dashboard for monitoring servers and system performance, setting minimum and maximum thresholds for jobs, and remotely controlling live ETL activities, including the starting, stopping and pausing of data integration jobs.

Pentaho Capabilities – Dashboards

Pentaho dashboards gives business users the critical information they need to understand and improve organizational performance.

Pentaho Dashboards delivers this visibility by providing:

- Rich, interactive displays including Adobe Flash-based visualizations so that business users can immediately see which business metrics are on track, and which need attention
- Self-service dashboard designer that lets business users easily create personalized dashboards with zero training
- Integration with Pentaho Reporting and Pentaho Analysis so that users can drill to underlying reports and analysis to understand what factors are contributing to good or bad performance
- Portal integration to make it easy to deliver relevant business metrics to large numbers of users, seamlessly integrated into their application
- Integrated alerting to continuously monitor for exceptions and notify users to take action

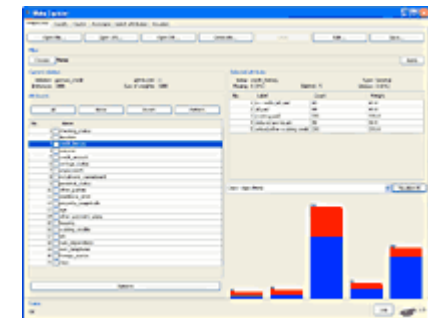


Pentaho Capabilities – Data Mining

Data Mining is the process of running data through sophisticated algorithms to uncover meaningful patterns and correlations that may otherwise be hidden. These can be used to help you understand the business better and also exploited to improve future performance through predictive analytics.

Features of Pentaho Data Mining are:

- Provides insight into hidden patterns and relationships in your data
- Provides indicators of future performance
- Enables embedding of recommendations in your applications
- Enables you to take full advantage of a range of data mining algorithms
- Graphical user interfaces are provided for data pre-processing, classification, regression, clustering, association rules, and visualization.



Pentaho Related Services

- Deployment Services
- Support Services
 - Training
 - User support

Pentaho Case Study 1 :

Client:

Client is an online offering in Singapore. They created an application to be the premier destination for Anyone seeking information about Singapore, its people and its businesses.

Problem:

- Access to timely search metrics
- Excessive dependence on IT for timely business information
- Rapidly growing business with rapidly-evolving information needs

Solution:

- Following Pentaho Modules Deployed
 - Pentaho Data Integration Enterprise
 - Pentaho Reporting Enterprise
 - Pentaho Dashboards Enterprise

Benefits:

- Improved product performance visibility for product development
- Self-service business user access to timely business metrics
- Ability to understand user trends, keyword popularity, and competitors
- Rapid adoption by business users of rich graphical dashboards and reports

Pentaho Case Study 2 :

Client:

Client is a leading Italian private collective guarantees consortium.

Problem:

- Prior to the deployment of this solution, Client's reporting was scattered and difficult to manage, and it was hard for business users to access and analyze Key Performance Indicators (KPIs), across different business areas.

Solution:

- Following Pentaho Modules Deployed
 - Pentaho Reporting
 - Pentaho Analysis
 - Pentaho Dashboards
 - Pentaho BI Platform
 - Pentaho Data Integration

Benefits:

- Improved response time to customer needs
- Fast, reliable, centralized access to company information
- Complete delivery of business intelligence as a “service”

What we offer in Pentaho?

Deployment Services	
Training	
Support Services	

We also provide hosting options. Please contact us for the details.

Contact Us

- For Pentaho related services and how we can help you do contact us at 91-20-66463200 and our sales / technical member can get back to you.

More information on Pentaho : <http://www.pentaho.com>

More information on Fidel : <http://www.fideltech.com>

